



10 Hepburn Place Nikenbah, QLD



4



2



4

Stunning Nikenbah - Brand New 'The Springs' - Light, Bright & Airy

Welcome to 10 Hepburn Place, Nikenbah

Enjoy the WOW factor! Drive through access with large concrete off street parking for boats, caravans etc

A big, beautiful light bright and airy family home, offering a prime location, high quality finishes and space for the whole family.

You'll love what's on offer here -

- Family bathroom with bath and separate toilet.

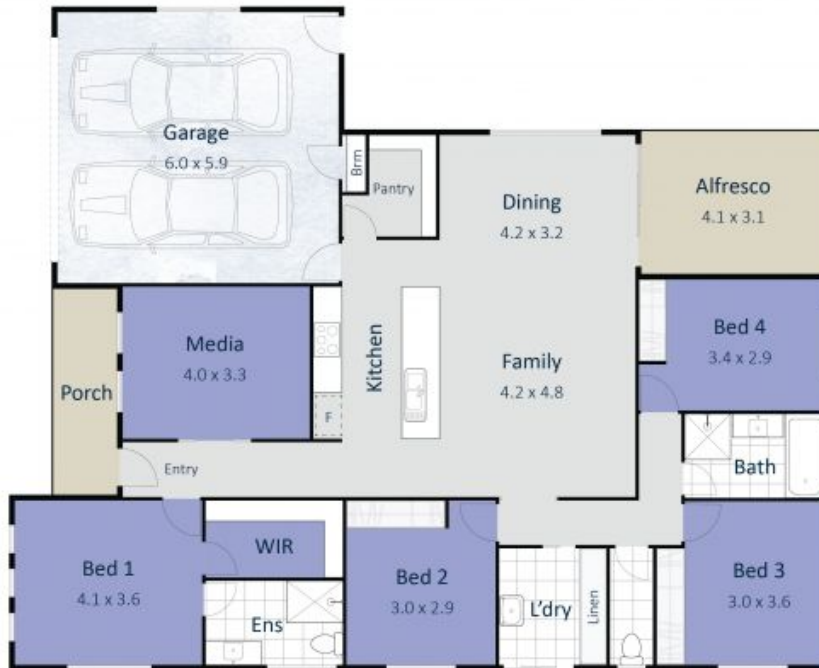


Kristy Sloan

0407 127 072

Toni West

0427 372 297



10 Hepburn Place, NIKENBAH

4 Bed 2 Bath 2 Car

OnTrend
Property Group

Kristy Sloan
0407 127 072

Total Area 220m²

Whilst every attempt has been made to ensure the accuracy of this floorplan, measurements are approximate and therefore the intended use of this image is for illustrative purposes only and is subject to strict copyright. For more information please contact corner design studio.

10 Hepburn Place

Nikenbah, QLD

OnTrend
Property Group